

The building was built in 1964 as Fukuoka Prefectural Cultural Hall holding a library. Fukuoka Prefectural Museum of Art opened here in 1985.



Let's go to Kenbi with this handbook!



1. Mountain fold

FUKUOKA PREFECTURAL MUSEUM OF ART
5-2-1 Tenjin, Chuo Ward, Fukuoka City, 810-0001
Tel:+81-092-715-3551 Fax:+81-092-715-3552

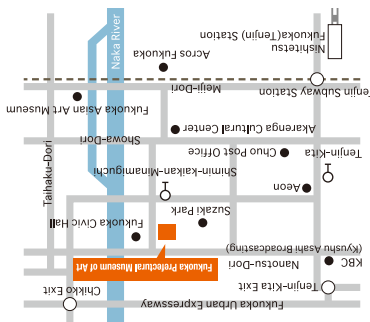
*Wheelchair accessible restroom is available
Teachers, Persons with disability ID and one person accompanying them are admitted free of charge.
Collection exhibition is free for ① under high school students on Saturday ② children and students led by school teachers. *Closing days are subject to change.
New Year holidays. *Closing days are subject to change.
Closed on Mondays (open on holiday Mon. and closed on the following days)
Library: 9am-12am, 1pm-5:30pm
Hours: 10am-6pm (admission until 5:30pm)

General Information

- Easy Access: parking available for 50 vehicles
- Metro
- Subway Kuko Line
- Fukuoka City
- Train
- Nishitsu Tenjin
- Omura Line
- Bus
- Nishitsu Bus
- Car



For more information



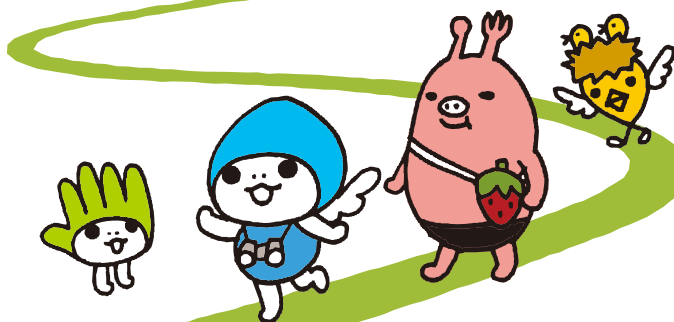
Convenient!



4. Mountain fold

Let's go to KENBI together!

FUKUOKA PREFECTURAL MUSEUM OF ART



Cut

What is an art museum?

It's a place where we can enjoy artworks. We should treat them carefully so that our friends can also enjoy them in the future.



3. Mountain fold

Easy!



2. Valley fold

Keep in Mind

- Use your inside voice to chat about what you see, think, and imagine.
- Please walk while you're in the museum. Go too fast and you might bump into artworks or people.
- Look with your eyes, not with your hands. Help us keep the artwork safe.
- Draw and write what you see using pencils.
- Thank you for not drinking and eating in the galleries.



Easy to make!
Check the back side for instruction



Convenient!
Easy!

LET'S GO TO KENBI

THE INSTRUCTION FOR THE HANDBOOK



We collect artworks related to Fukuoka prefecture and Kyushu.

We have over 10,000 works and resources.



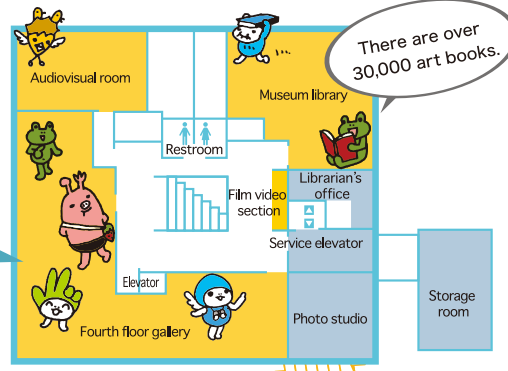
The pattern of brown tiles is inspired by Hakata-ori textiles.

We organize and provide books in the library.

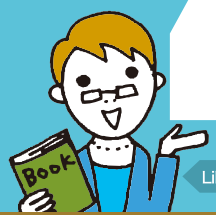
The exhibition is free for under high school students on Saturday.



Takashima Yayuru, Candle, Tashiro era
This gallery mainly exhibits artworks from the collection of Fukuoka Prefectural Museum of Art.



There are over 30,000 art books.



Librarians

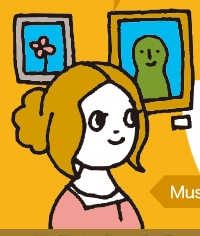
We are stationed in the gallery to protect artworks.



Wheelchair accessible restroom is here.

You will always find various exhibitions held here.

Storage rooms have unique functions to protect artworks.



Museum protection staff

We research the artworks and plan the exhibitions.

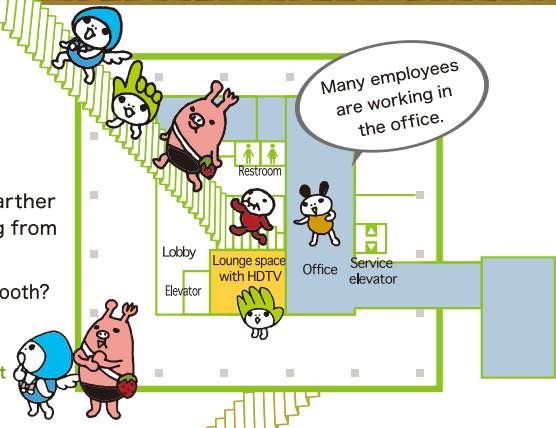
Tips for viewing art

- * Look at the entire work.
- * Try standing closer or farther from the work. Try looking from a different angle.
- * Is the surface rough or smooth? How does it look like?

There may be many different ways to view the work.



Curators



Many employees are working in the office.

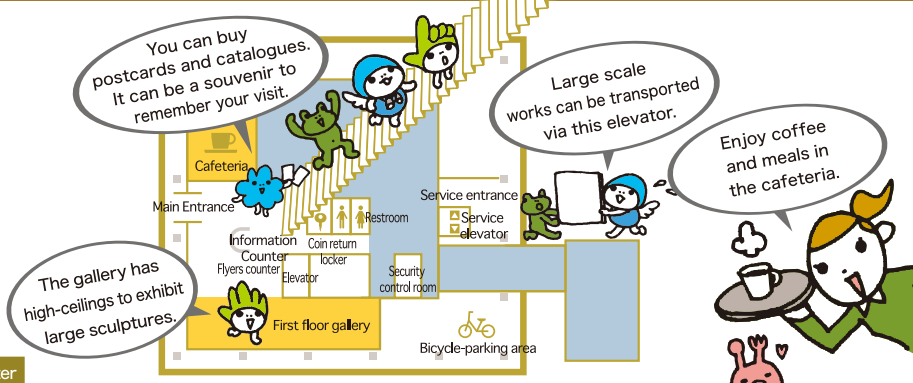
We offer information about the museum and exhibitions.

You can buy postcards and catalogues. It can be a souvenir to remember your visit.

Large scale works can be transported via this elevator.

Enjoy coffee and meals in the cafeteria.

The gallery has high-ceiling to exhibit large sculptures.



Information Counter

- 1 Print out the PDF using the duplex short edge binding function.
- 2 Check the folding instruction printed on the back side and fold the paper accordingly.
- 3 Cut along the dotted line and remove this part of the paper.
- 4 It's complete.